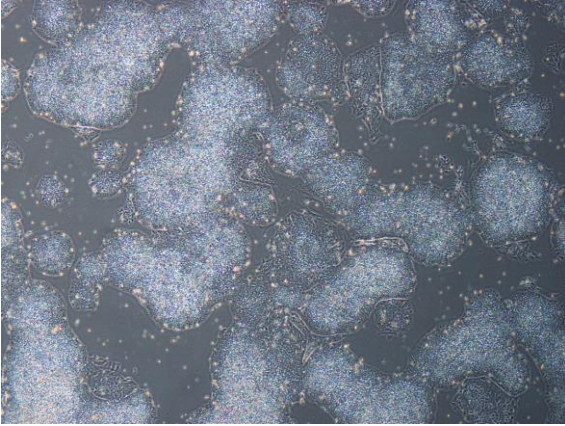
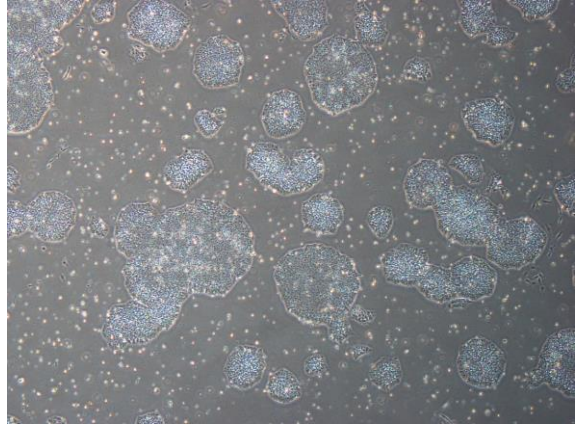


【 CiRA-j-1549 】 Morphology of iPSC colonies

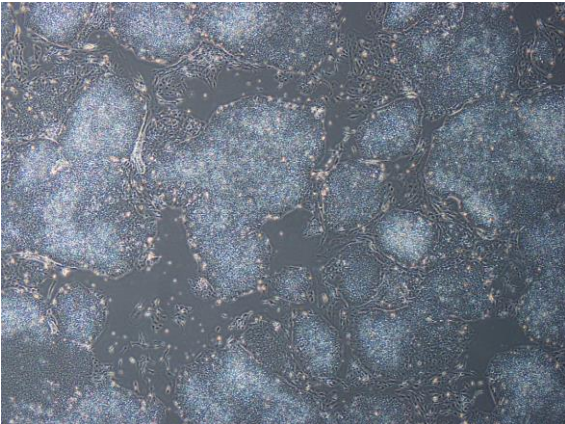
CiRA-j-1549-A: passage-3



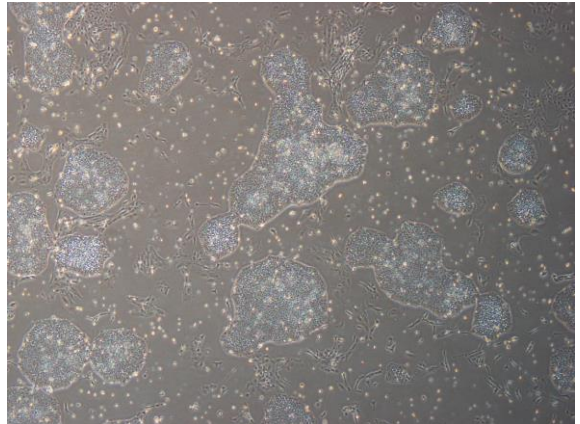
CiRA-j-1549-B: passage-3



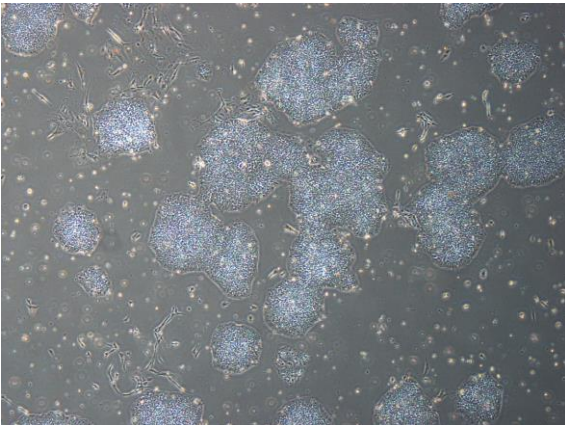
CiRA-j-1549-C: passage-3



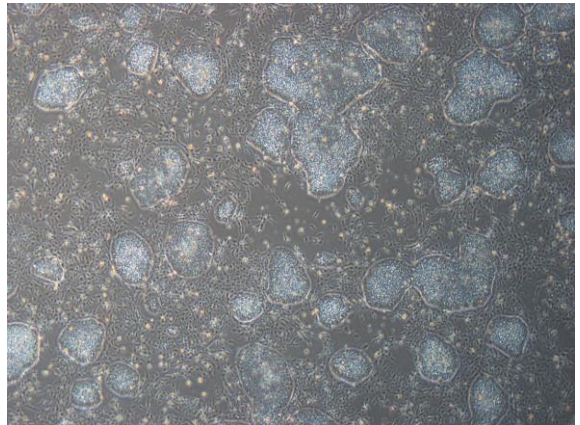
CiRA-j-1549-D: passage-4



CiRA-j-1549-E: passage-5



CiRA-j-1549-F: passage-3



(All images were captured at 4x magnification)